

Important Phone Numbers & Websites



	Normal Business	Emergency
American Red Cross (Local Chapter)	239-278-3401	239-278-3401
Arson Alert Hotline	800-342-5869	800-342-5869
Blood Donor Centers	888-9-DONATE	
- Lee Memorial Blood Center	239-343-2333	
- Florida's Blood Centers	239-574-3170	
Cape Coral Emergency Management	239-573-3022	911
Cape Coral Police Department (non-emergency)	239-574-3223	911
Dept. of Financial Services (Insurance)	239-461-4001	800-22-STORM
Federal Emergency Management Agency	800-621-3362	800-462-7585
Florida Division of Emergency Management	850-413-9969	
Fort Myers Police Department	239-321-7700	911
Lee County Animal Services	239-533-7387	239-533-7387
Lee County Emergency Information Hotline/United Way 211	239-433-2000	211
Lee County Emergency Management	239-533-0622	239-533-0622
Lee County Government	239-533-2111	
Lee County Health Department	239-332-9501	239-332-9501
Lee County Public Safety & EMS	239-533-3911	911
Lee County Sheriff's Office	239-477-1000	911
Mobile or Manufactured Home Residents	850-617-3004	
National Weather Service/Tampa Bay	813-645-2323	
Poison Information	800-222-1222	800-222-1222
Salvation Army, The	239-278-1551	239-278-1551
Sanibel Police Department	239-472-3111	911
Traffic Conditions in Florida (Current)	511	511
United Way of Lee, Hendry, Glades & Okeechobee Counties	239-433-2000	211

Websites

Community Emergency Response Teams (CERT)	www.ready.gov/citizen-corps
Department of Financial Services (Insurance)	www.myfloridacfo.com
Department of Homeland Security	www.dhs.gov/
Florida Lightning Safety	www.weather.gov/safety/lightning
Mobile or Manufactured Home Residents	www.flhsmv.gov/mobilehome
American Sign Language Preparedness Videos	www.leegov.com/publicsafety/emergencymanagement/plan
StormReady	www.weather.gov/stormready/



Lee County Emergency Management's online communication tools have increased our ability to engage the community in a different environment, allowing for more feedback at the local level.

Following is a list of online resources providing useful information to help you be prepared for an emergency.



Lee County Emergency Management Website - www.LeeEOC.com

Our website is a one-stop shop to find the information and tools you need to prepare your family for any hazards that can happen in Southwest Florida. You can find:

- *Family Preparedness Plan* – A comprehensive, easy-to-use template to help you prepare a plan of action for an emergency situation.
- *Special Medical Needs Program Application* – A no-cost program available to those with medical needs.
- *Shelter locations* – A comprehensive listing of shelters in Lee County.
- *Notifications & Resources* – Links to social media accounts, apps and websites.



Facebook

www.facebook.com/LCEMFL - Official Lee County Emergency Management page. Offers preparedness information in addition to emergency information

www.facebook.com/LCEMVolunteers - Lee County Emergency Management Volunteers page. Provides information on how you can help Lee County prepare for emergencies.



Twitter

@LeeEOC – Official Lee County Emergency Management Twitter account. Offers emergency information.

@LCEMFL – Official Lee County Emergency Management Twitter account. Emergency information and year-round updates on seminars, safety tips. Etc.



LeePrepares

Download this free app to find your evacuation zone and sign up for evacuation text notifications. Shelter locations, preparedness information and local weather is provided. Available through both Apple & Android stores.



AlertLee

Sign up for this free service to receive phone calls, texts and/or email about significant emergencies or critical protective actions needed to safeguard life and property. Register at www.AlertLee.com.



Ride LeeTran

Visit www.RideLeeTran.com for real-time bus tracking, find your nearest bus stop and plan your trip.



Volunteer Application

Lee County's volunteer program provides service opportunities including office assistance, emergency management duties and accredited student volunteer hours. Visit www.LeeEOC.com to apply.



Know Your Evacuation Zone

Lee County service which allows you to find your evacuation zone by entering your address. A link can be found on our website – www.LeeEOC.com and on the LeePrepares app.



NOAA Weather Radios

These radios provide 24-hour broadcasting providing current and forecasted weather conditions. This is the earliest warning system for sudden weather hazards such as tornadoes and severe thunderstorms. These radios can be purchased online and in stores.



Emergency Alert System & Wireless Emergency Alerts

This Federal emergency alert system may be used by State and Local authorities for emergencies. The emergency alert system sends messages on radio and TV. The wireless emergency alerts are sent via phones.

Television & Radio Stations

NOAA Weather Radios provide 24-hour continuous broadcasting of current and forecasted weather conditions. The following are the identification or FIPS codes for Lee and our adjoining counties:

- **Fort Myers Channel 4 (162.475 MHz)**
- **Lee - 012071**
- Collier - 012021
- Desoto - 012027
- Charlotte - 012015
- Hendry - 012051



WGCU-90.1FM is the Southwest Florida affiliate of the Florida Public Radio Emergency Network, a system created to communicate information statewide before, during and after an emergency.

Stations in the network are equipped to stay on the air even during power outages and will continue to provide information during the recovery of a major weather event or other emergency. Working in partnership with the Florida Division of Emergency Management and the Lee County Emergency Operations Centers, listeners can be assured of having access to the most up-to-date information.

TV STATIONS	AFFILIATE	LOCAL / SATELLITE
WUVF-LP	Univision	2
WINK	CBS	11.1
WTPH-LP	Azteca America	14
WTLE-LP	Unimas	18
WBBH	NBC	20.1
WZVN	ABC	26.1
WGCU	PBS	30.1
WFTX	FOX	36.1
WWDT-CA	Telemundo	43
WXCW	CW	46.1
WRXY	CTN (Religious)	49.1
WLZE-LP	Univision	51.1

RADIO – AM

WAQI	710	WAFZ	1490
WJBX	770	WCCF	1580
WWBA	820	WNPL	1460
WAXA	1200	WFLN	1480
WNOG	1270	WSRQ	1220
WWCL (Spanish)	1440	WLSS	930

RADIO – FM

WGCU	90.1	WZJZ	100.1
WFSX	92.5	WAVV	101.1
WIKX	92.9	WWGR	101.9
WWDH	93.3	WJGO	102.9
WXNX	93.7	WXKB	103.9
WARO	94.5	WSGL	104.7
WOLZ	95.3	WCVU	104.9
WRXK	96.1	WJPT	106.3
WINK	96.9	WCKT	107.1
WTLQ	97.7		



Be Prepared!



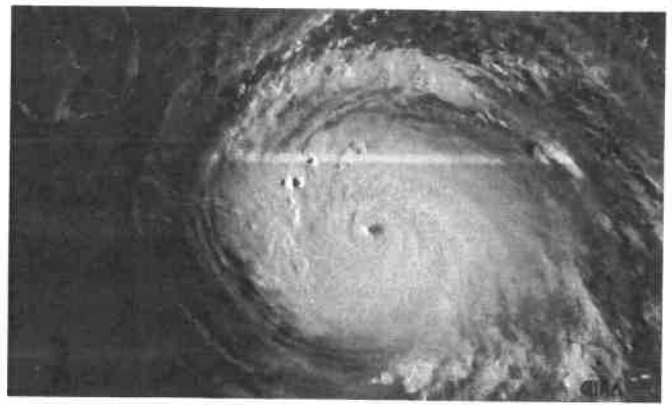
Emergency alerts are passed through to some audio/video streaming services and other services are working towards participating.

Hurricanes & Flooding

The Atlantic hurricane season begins June 1 and ends November 30. Peak hurricane season is between August and October.

Hurricanes are not just coastal problems. They can affect residents along the major rivers and waterways in Southwest Florida to Lake Okeechobee.

There are specific risks associated with hurricanes such as wind, tornadoes, heavy rainfall and storm surge. Of these, the greatest risk to life is posed by storm surge and rainfall flooding.



Hurricane Irma approaching Florida

Storm Surge



VS.



Flooding

Storm Surge is an abnormal rise of water generated by a tropical storm or hurricane. As these storms make landfall, they produce water level rise and strong winds that push water into shore. Storm surge forecasts do not account for large crashing waves or debris in the water.

Due to low elevation and proximity to beaches and other tidal waters, storm surge can travel far inland in Lee County.

Heavy or prolonged rain can result in flooding. Prolonged rainfall saturates the ground and less of the water can be soaked up. Heavy rainfall can have less of a chance to be soaked up by the soil.

'Sheet flow' is a natural flow of water south through the Florida peninsula and may cause flooding along rivers, creeks and canals.

Need to Know

- Foundations of homes may fail.
- Standing water may contain debris, chemicals, and raw sewage.
- Electricity may be out – potentially for a long time.
- Tap water may be unsafe for drinking, bathing or cooking.
- Roadways & bridges may sustain heavy damage, be covered in water and/or debris.
- Flood waters may contain debris, chemicals, and raw sewage.
- Electricity cannot be restored with high water levels surrounding homes.
- Well water may be unsafe for drinking, bathing or cooking.
- Septic tanks may fail or become damaged.
- Young children and animals can drown, be injured, or become severely ill from playing or swimming in flood waters.

Be Prepared - Stay Safe - Stay Dry!

Saffir-Simpson Hurricane Scale

Category 1

Winds: 75 to 95 mph
Damage: Minimal; signs, tree branches, power lines down

Category 2

Winds: 96 to 110 mph
Damage: Moderate; larger signs, tree branches blown down

Category 3

Winds: 111 to 130 mph
Damage: Extensive; minor damage to buildings, trees blown down

Category 4

Winds: 131 to 155 mph
Damage: Extreme; almost total destruction of doors/windows

Category 5

Winds: More than 155 mph
Damage: Catastrophic; buildings, roofs, structures destroyed

Evacuate or Shelter in Place?

Deciding whether to evacuate or shelter in place depends upon the incident or event occurring. Various natural and man-made hazards could happen in this area, such as floods, extreme heat, tropical cyclones, hazardous material spills, and pandemic diseases, just to name a few. Each of these requires careful thought and planning. The first step is to know your risks and personal needs.



For weather events that may result in evacuations being ordered, you need to know your evacuation zone. Does your neighborhood flood during heavy rains? Do you require electricity for medical equipment/conditions? Evaluating your risks will help you be better informed on where to shelter. Sheltering with family, friends or in a hotel will be more comfortable than a shelter, but we will open shelters for these events. If Emergency Management orders your zone to be evacuated, you need to leave the area for your safety.

For hazardous material spills or heavy smoke from a wildfire in the area, sheltering in place may be the appropriate choice. Tune into news or social media sites to get instructions from officials. During extreme heat waves, if you do not have air conditioning, seek shelter in a shopping mall and stay hydrated.

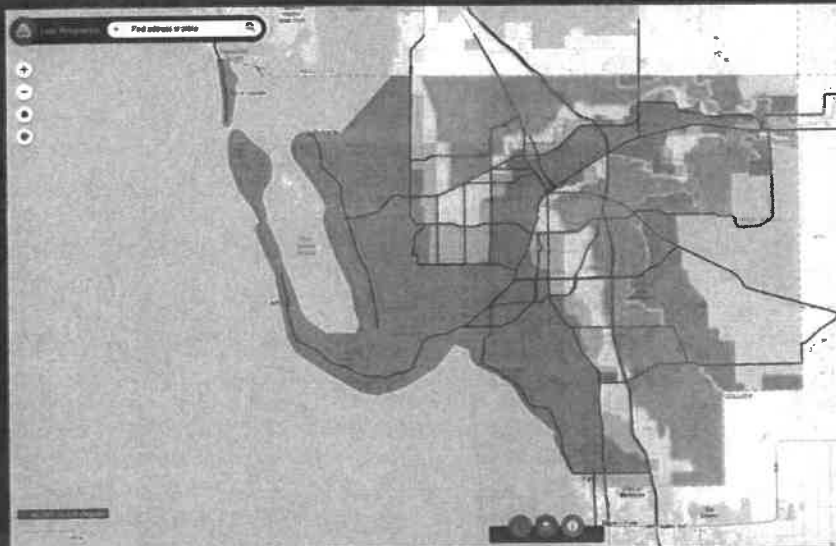
Having a plan for what you will do in events like these will allow you to prepare in advance, rather than react and panic. Emergency Management has a list of hazards and a Family Emergency Plan on our website www.LeeEOC.com and LeePrepares app.

Know Your Evacuation Zone

Do you know your Evacuation Zone?

Visit our website www.LeeEOC.com to find out what zone you are in.

1. Click on "Know My Evacuation Zone" in the navigation bar;
2. Click the Find My Evacuation Zone link;
3. Enter your address in the search bar.



Plan – Prepare – Pass it on

The time to develop emergency plan is *prior to a disaster*. Being prepared will help keep you and your loved ones safe and establish a reliable network of support during a crisis.

Plan



- Know your risks:
 - What is your Storm Surge/Evacuation Zone?
 - Are you in a flood zone?
 - Do you live in a mobile or manufactured home?
 - What year was your house built?
 - Does your house have storm shutters?

Prepare



- Prepare evacuation or sheltering options.
- Prepare an Emergency Supply Kit before the start of hurricane season.
- The Family Emergency Plan is a great tool to help you create a plan that is specific to your family's needs. Find it on our website www.LeeEOC.com.
- Secure items in and around your home before tropical storm force winds arrive.
- Practice as many elements of your plan as possible.

Pass it on



- Be sure all family members know who to call or where to gather if you become separated.
- Let family and friends in other locations know your evacuation plans.

Preparation Tips



- Prepare a shelter plan.
- Know your evacuation route.
- Set your phone up for emergency alerts & warnings.
- Prepare a family communication plan.

Hurricane Supply List

Food related

- Drinking water – 1 gallon, per person, per day
- Non-perishable food/special dietary needs
- Manual can opener
- Juice/instant coffee/tea bags
- Cooler
- Lighter/matches
- Pots/pans/Camp stove or grill

Personal Items

- Blankets, pillows, sleeping bag, cot
- Toiletries
- Spare glasses/contacts
- Hearing aid batteries
- Extra clothing/rain gear/closed toe shoes
- Personal items such as books, toys or cards
- Infant and/or senior supplies
- Important papers including valid identification
- Spare keys
- Cash/Credit cards/change/checks
- Pens/pencils/paper

Medical

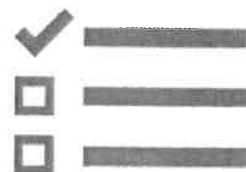
- Two-week supply of prescribed medication
- Cooler with ice for medications, if needed
- Medical equipment & assistive devices
- Medical alert tags or bracelets that identify your disability-related needs

Pets/Service Animals

- Water – 1 gallon per animal, per day
- Cate or carrier for each animal
- Food/treats
- Toys/comfort items
- Clean-up supplies
- Immunization records/photos

Safety Equipment

- Battery-operated radio, flashlight, television, clock
- Extra batteries
- NOAA Weather Radio
- First Aid Kit
- Landline phone
- Chemical light sticks
- Whistle



General Population & Pet Friendly Shelters

General Population Shelters

A shelter is a safe place to be during an emergency. However, it offers only the basic life-sustaining necessities. The shelter may not have electricity for the majority of your stay. It will be noisy, crowded and somewhat uncomfortable.

Lee County has a limited amount of shelters and space within the shelters. Plan to use an alternate location. If you have no other safe place to go, shelters will be open.

Not all shelters will be opened during every storm. A list of Lee County shelters can be found in this publication and on our website – www.LeeEOC.com. Local radio, television news and our website will broadcast open shelters.

Service animals are allowed at all shelters. “Service Animals” are defined as a dog or miniature horse that is trained to perform a service or task for their owners and are not pets. Comfort animals or emotional support animals are NOT service animals.

Be prepared

Limited food and water will be available; bring three-days’ worth of your own food and water, too. Cots are not provided. Bring items that will help you through this difficult time such as sleeping bags, water, snacks or special dietary needs, books, clothing and medications.

Arriving at the shelter

Accountability is important for your safety – register with shelter staff and check out if you leave. Be considerate of others around you. Listen for official information. Consider volunteering to help shelter staff.



Pet-Friendly Shelters

Pet shelters will be available for every storm although locations may vary. No registration is required. For the safety of other sheltered people and animals, make alternate plans for any animals posing a danger.

Prepare a supply kit for your pets including non-perishable food & water, medications, sturdy cage or carrier, collar & leash, up-to-date vaccination records, pet waste bags. Cat crates must be large enough to include a litter pan. Your pets identification should be on its collar and consider microchipping for easier location should they get separated from you. Lee County Animal Services offers a low-cost microchipping program to County pet owners. More information can be found at www.leegov.com/animalservices or call 239-533-7387.

If you have exotic pets, check with your veterinarian for suggestions on shelters for them.

Lee County strives to provide a safe environment during emergency situations.

Smoking, alcohol and guns are prohibited at all shelters.



Preparation Tips

- Know shelter locations.
- Listen to the radio or look online for shelter opening information.
- Prepare items needed at shelters – for family and pets.



Special Medical Needs Program

Lee County is committed to assisting residents whose health would quickly deteriorate in a public shelter during emergencies. The Special Needs Program is available to all Lee County residents at no cost.

Who Qualifies for Special Medical Needs Shelter?



Special medical needs shelters are for people:

- With medical impairments or disabilities who are medically stable but require medical assistance.
- Whose care exceeds basic first aid provided at a public shelter or need assistance with basic, everyday tasks.
- Who require electricity for medical equipment such as oxygen, nebulizers, IV pumps, etc.
- With medical conditions such as moderate/advanced Alzheimer's, dialysis, comorbidity, moderate/advanced neuromuscular disorders.

How Do I Register?



The easiest way to register is online at www.LeeEOC.com

You can register yourself, or a family member or caregiver can register for you. If you do not have access to a computer, you can also register by calling Lee County Emergency Management at 239-533-0622.

Registrations must be renewed yearly.

Register early - registrations will not be taken once Lee County enters the five-day hurricane forecast cone.

Preparation Tips

- Register with the Special Medical Needs Program.
- Have a Go-Kit ready.
- Make arrangements for a caregiver or friend to accompany you.

Do I Need a Caregiver?



A companion or caregiver needs to accompany you during the time you shelter. Florida Department of Health-Lee County has a limited number of staff working. Caregivers will need to bring shelter survival supplies for themselves.

Visit www.LeeEOC.com or call Lee County Emergency Management at 239-533-0622 for more information.

What if I Need Transportation?



If you do not have a vehicle or a ride to get to a Special Medical Needs shelter or a general population shelter, you can register for transportation. Lee County Emergency Management works with LeeTran to organize transportation for those who need assistance.

What if I do not pre-register?

If you have not pre-registered and do not have a ride, you can go to any LeeTran bus stop or transfer station for a free bus ride to a shelter.

Bus schedules & the Transit app are available on the LeeTran website: www.RideLeeTran.com.



Service animals are allowed in all shelters. You can bring your dog or cat with you to a Special Medical Needs shelter. Animals are housed in a different area but you will have access to feed, walk and spend time with them.

Bring food and supplies your pet will need while at the shelter.

2019 Evacuation Zones and Public Shelters

EMERGENCY PUBLIC SHELTERS

Bonita Springs

1. Bonita Springs YMCA – 27200 Kent Rd

Cape Coral

2. Island Coast High School – 2125 DeNavarra Pkwy

Estero

3. Estero Recreation Center – 9200 Coriscrew Palm Blvd
4. Hertz Arena – 11000 Everblades Pkwy

Fort Myers

5. Dunbar High School – 3800 Edison Ave
6. South Fort Myers High School – 14020 Plantation Blvd
7. Treeline Elementary School - 10900 Treeline Ave

Lehigh Acres

8. East Lee County High School – 715 Thomas-Sherwin Ave
9. Harms Marsh Elementary School – 1800 Unice Ave N
10. Harms Marsh Middle School – 1820 Unice Ave N
11. Mirror Lakes Elementary School – 525 Charwood Ave
12. Tortuga Preserve Elementary School - 1711 Gummery Rd
13. Varsity Lakes Middle School – 801 Gummery Rd
14. Veterans Park Recreation Center – 49 Homestead Rd

North Fort Myers

15. North Fort Myers Academy of the Arts – 1856 Arts Way
16. North Fort Myers Recreation Center – 2000 N Recreation Park Way

San Carlos

17. Allico Arena – 12181 FGCU Lake Pkwy

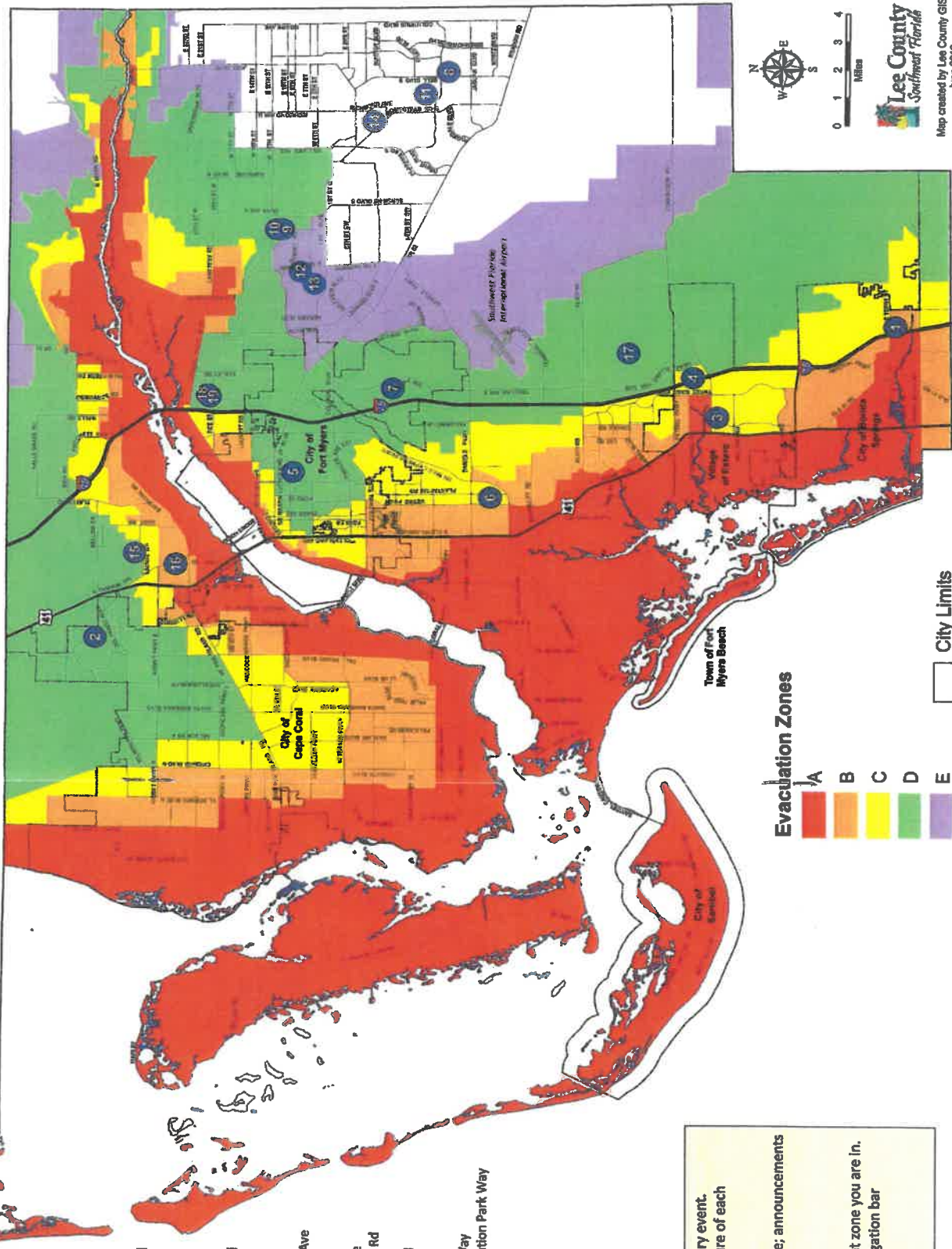
Tice

18. Manatee Elementary School - 5301 Tice St
19. Oak Hammock Middle School - 5321 Tice St

••Be Advised: NOT all shelters will be open for every event. The opening of shelters is dependent upon the nature of each specific event.

Please Note: Pet-friendly sheltering will be available; announcements will be made at the time.

Know Your Evacuation Zone:
 Visit our website www.LeeEOC.com to find out what zone you are in.
 1. Click on "Know My Evacuation Zone" in the navigation bar
 2. Click the Find My Evacuation Zone link
 3. Enter your address in the search bar



Evacuation Zones

- A
- B
- C
- D
- E

City Limits

Health Tips After Storms

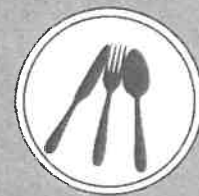


Storms can bring heavy rains that could increase the risk of diseases. Following are some tips to help you avoid becoming ill. For more information during an emergency event call the **Florida State Assistance Information Line (SAIL) at 1-800-342-3557.**

Find more information online at lee.floridahealth.gov.

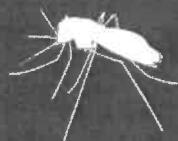
FOOD

- **Food & Dirty Water:** Do not eat food that has come in contact with dirty water from floods or tidal surges.
- **Commercial Cans of Food:** Canned foods that are bulging or opened should not be eaten. Remove labels from and disinfect unopened cans. Assume home-canned foods are unsafe.
- **Baby Formula:** Infants should only be fed ready-to-feed formula or prepare powdered/concentrated liquid formula with sterilized water. Only use sanitized bottles and nipples. Unused formula must be refrigerated. If breastfeeding, continue to do so.
- **Frozen or Refrigerated Foods:** If refrigerators or freezers have had no power since the storm, clean them out. Perishable foods are unsafe for eating.



MOSQUITOES

- Heavy rains & flooding events can lead to an increase in mosquitoes.
- **Dusk & Dawn:** Mosquitoes are most active during these times. Avoid being outdoors.
- **Clothing:** Wear long-sleeved shirts, long pants, and socks.
- **DEET:** Use repellants containing 30% DEET. Apply repellant directly on clothing for more protection. Follow manufacturers directions. Do not use on children less than 2 months old. Use mosquito netting or keep infants indoors.
- **Drainage:** Mosquitoes lay their eggs in standing water. Clear stagnant water that has collected near your home.



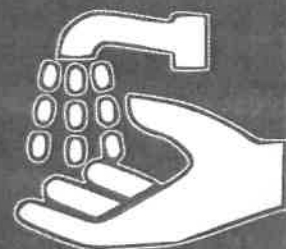
HEAT EXHAUSTION

- **Warning Signs:** Heavy sweating, paleness, muscle cramps, tiredness, weakness, dizziness, headache, nausea, vomiting, or fainting.
- **Cool Off:** Drink cool, non-alcoholic beverages. Take a shower, bath, or sponge bath. Wear lightweight clothing. Rest in an air-conditioned environment.
- **Heat Exhaustion:** Can lead to stroke. Severe symptoms include cool, moist skin, fast and weak pulse, fast and shallow breathing. Seek medical attention immediately if symptoms continue for more than an hour or if you have heart problems or high blood pressure.



WATER

- **Always Wash Your Hands:** Use soap and water that has been boiled or disinfected.
- **Boil Water Notice:** If a boil water notice is in effect for your area, take precautions if you have a private well. If you are unsure if your water is safe, drink commercially bottled water.
- **Boiling Water:** Maintain a rolling boil for one minute to remove bacteria.
- **Disinfecting Water:** Mix 8 drops of plain, unscented bleach per gallon of water and let stand for 30 minutes. If water is still cloudy, repeat process.
- **Infection & Floodwater:** Raw sewage may be present in floodwater. Keep open cuts and sores clean and apply antibiotic ointment after cleaning. See a doctor if the wound develops redness, swelling or drainage.
- **Children & Floodwater:** Children should not play in floodwater. If toys have been in floodwater disinfect them by using ¼ cup bleach in one gallon of clean water, let stand for at least 30 minutes and air dry.



Generators

When the power goes off, many residents turn to emergency generators to power freezers, refrigerators, lights, fans and other appliances. If you use a generator, extreme caution is required.

While convenient and useful, generators can create hazards for homeowners and electric utility workers. Always read and follow the manufacturer's safety and operating instructions.



Safety Tips



Operate it outdoors in an area with plenty of ventilation. Never run a generator in a home or garage. Generators emit deadly carbon monoxide.



Turn the generator on before plugging appliances to it. After the generator is running, turn your appliances & lights on one at a time to avoid overloading the unit. Generators are recommended for temporary use; prioritize your needs.



Do not connect a generator to a home electrical outlet or circuit breaker panel to avoid back feed. Use heavy-duty extension cords to connect appliances to the outlets on the generator.



Be sure the generator is turned off and cool before fueling it. Do not store fuel indoors. Flammable liquids should be properly labeled in non-glass safety containers.



Keep children & pets away from portable generators. Many generator parts are hot enough to burn you during operation.



Make sure your hands are dry before touching the generator.



Generators pose electrical risks, especially when operated in wet conditions. Use a generator only if necessary when wet conditions exist. Protect the generator by operating it under an open structure on a dry surface where water cannot form puddles or drain under it.

Carbon Monoxide Exposure

Carbon Monoxide (CO) is a colorless, odorless and tasteless poison gas. It is a component of the exhaust from the generator engine. The symptoms of exposure are subtle, but deadly. Do not use generators, charcoal or gas grills indoors.

Inexpensive CO detectors, similar to smoke alarms, are readily available and recommended as an added safety precaution.

Call 911 or the Poison Information Center at 1-800-222-1222 if you think you have been poisoned. More information is available online - floridapoisoncontrol.org.

Mild Exposure

- Headache
- Nausea
- Vomiting
- Dizziness
- Blurred Vision



Medium Exposure

- Severe headache
- Drowsiness
- Confusion
- Rapid heart rate



Severe Exposure

- Unconsciousness
- Convulsions
- Cardiac or respiratory failure
- Death

SPECIAL MEDICAL NEEDS PROGRAM

Lee County Public Safety

The information on the following two pages will help you make the best possible decision for your safety and well-being in the event of an impending hurricane.

Our Special Medical Needs Program offers transportation and shelters for residents that do not have a safe place to be during the storm, or do not have a way to get to the shelter. If possible, arrange to evacuate with family, friends, or at a motel out of harm's way for your "Plan A". A shelter should be your "Plan B".

Making specific preparations now for where you will go if a hurricane is heading this way will take the worry and stress off both you and your loved ones. Pack items to take with you well in advance so you will be ready to leave as soon as evacuation orders are issued.

Emergency Public Shelters are usually located in buildings with large open areas, such as schools, and are a good fit for anyone who is self-sufficient and needs no outside assistance in performing activities of daily living. You will be provided floor space only, so you must bring everything you need to shelter, such as bedroll, lawn chair, pillow, blanket, clothes, etc. Food and water will be provided but it would be wise to bring some of your own, as well. Shelters will be crowded, and with a large storm, may fill up quickly.

Special Medical Needs Shelters are located in schools, as well, and are for individuals whose medical issues cannot be managed in a public shelter. Electricity is provided for medical equipment. You need to have a companion/caregiver accompany and assist you during sheltering. We will provide oxygen at the shelter. You must bring your medical equipment, medicines, personal items, money, etc. Your companion/caregiver must bring the same things, plus something to sleep on, such as a cot or lawn chair. We plan to have cots for those registered, but in a catastrophic storm our supplies will run out, so bring the things you cannot do without. Your pet may shelter with you. You must bring crate/carrier, leash & collar, food, clean-up supplies, vaccination record, and any other comfort items for pets.

Shelter spaces in **Hospitals** are assigned to people whose health issues are unmanageable in a Special Medical Needs Shelter. Sheltering will be in hallways, meeting rooms, or other large congregate spaces, and no medical attention will be provided. You **MUST** have a companion/caregiver shelter with you the entire time. A letter from your physician must accompany the application. A bed will be provided, and oxygen, if required. You must bring your medical equipment, medicines, personal items, money, etc. Your caregiver will need to bring the same items, plus something to sleep on. You may **NOT** bring your pets to shelter at the hospital.

Transportation to shelters can be pre-arranged by completing this application. LeeTran provides transportation to the shelters and Lee County EMS to the hospitals for those requiring stretchers. If you do not pre-arrange shelter transportation and realize you have no way to get to the shelter, you can go to any of the LeeTran bus stops and get a free ride to the shelters.

Hurricane Evacuation Check List

Make Your Plan

- Plan A: If possible, arrange to evacuate to family/friends/motel outside any evacuation areas.
- Plan B: Submit your Special Medical Needs Application
- Complete the Family Emergency Plan and keep it in your Go-Kit
- Start preparing your Go-Kit with the things you can pack early
- Know Your Evacuation Zone
- Let your family/friends know your evacuation plan
- Download the LeeAlert app

Approaching Storm

- Contact family/friends where you are evacuating to confirm your plan
- Secure your home and shutters

Ordered to Evacuate

- Confirm the evacuation is for your area – check the LeeAlert app, our website, or social media sites
- If you are registered with the Special Medical Needs Program, you will receive a call from us to confirm your shelter and transportation plans
- Finish packing your Go-Kit. Bring items critical to your survival, such as:
 - Important documents (ID, insurance/medical cards, etc.)
 - Prescriptions, over-the-counter pain and cold meds, etc.
 - Cash from the bank to get you through a few weeks
 - Medical support equipment (nebulizer, feeding pump, wheelchair, etc.)
 - ✓ Portable oxygen tanks to get you to the shelter, then home
 - ✓ Do **not** bring your concentrator
 - Personal hygiene items, clothing, blanket, pillow, extra glasses
 - Non-perishable food, can opener, snacks, drinks
 - Radio, ear buds or headphones, flashlight, extra batteries
 - Books, magazines, cards, puzzles, etc. to help pass the time
- Secure your valuables or take them with you
- Empty your refrigerator/freezer
- Turn off electrical power at main box
- Secure your home and evacuate area

Return Home

- Listen to radio/television for official announcement that it is safe to return to your area
- Determine that your home is not damaged and is “livable”
- Listen to the radio/television for information on FEMA or Small Business Association phone numbers for assistance

If you need further information or have any questions, please call Emergency Management, Special Needs Coordinator at (239) 533-0640.



**SPECIAL MEDICAL NEEDS PROGRAM
LEE COUNTY EMERGENCY MANAGEMENT**

PO BOX 398, FORT MYERS, FL 33902-0398
FOR INFORMATION CALL 239-533-0640 / FAX# 239-477-3636

Applications will **NOT** be processed when Lee County is in the 5-day hurricane forecast cone.

PERSONAL INFORMATION

Last Name	<input type="text"/>	Suffix	<input type="text"/>	First Name	<input type="text"/>	M.I.	<input type="text"/>
ID	<input type="text"/>	Date of Birth	<input type="text"/>	Primary language spoken	<input type="text"/>		
Gender	<input type="text"/>	Weight	<input type="text"/>	Height – feet	<input type="text"/>	inches	<input type="text"/>

PHYSICAL ADDRESS

Address	<input type="text"/>	Street	<input type="text"/>		Unit#	<input type="text"/>
City	<input type="text"/>		State	<input type="text"/>	Zip Code	<input type="text"/>
Subdivision/Community	<input type="text"/>		Gate Code	<input type="text"/>		
Residence type (single detached home, duplex, Apt/Condo, boat, mobile/manuf home)	<input type="text"/>		Living Situation (Live alone, Live with Relative, Live with Caregiver, Other)	<input type="text"/>		
Stairs? Number of Flights	<input type="text"/>	Utility Company (FPL, LCEC, Other)	<input type="text"/>			
Primary Phone	<input type="text"/>	Secondary Phone	<input type="text"/>	7-1-1 Relay/TTY	<input type="text"/>	
Email address	<input type="text"/>					

MAILING ADDRESS

Same as above

Mailing Address	<input type="text"/>	Unit#	<input type="text"/>	PO Box	<input type="text"/>	
City	<input type="text"/>		State	<input type="text"/>	Zip Code	<input type="text"/>

CAREGIVER INFORMATION

Caregiver Last Name	<input type="text"/>	Caregiver First Name	<input type="text"/>
Caregiver Primary Phone	<input type="text"/>	Caregiver Secondary Phone	<input type="text"/>
Caregiver email	<input type="text"/>		
Do you require a 24 hr caregiver?	<input type="checkbox"/>	Will caregiver stay with you at the shelter?	<input type="checkbox"/>

Applicant's Name



SPECIAL MEDICAL NEEDS PROGRAM
LEE COUNTY EMERGENCY MANAGEMENT

PO BOX 398, FORT MYERS, FL 33902-0398
FOR INFORMATION CALL 239-533-0640 / FAX# 239-477-3636

EMERGENCY CONTACT - LOCAL

Emergency Last Name	<input type="text"/>	Emergency First Name	<input type="text"/>
Emergency Primary Phone	<input type="text"/>	Emergency Secondary Phone	<input type="text"/>
Address	<input type="text"/>	Street	<input type="text"/>
		Unit#	<input type="text"/>
City	<input type="text"/>	State	<input type="text"/>
		Zip Code	<input type="text"/>
		Relationship	<input type="text"/>
Local Emergency Email	<input type="text"/>		

EMERGENCY CONTACT - OUT OF AREA

Emergency2 Last Name	<input type="text"/>	Emergency2 First Name	<input type="text"/>
Emergency2 Primary Phone	<input type="text"/>	Emergency2 Secondary Phone	<input type="text"/>
Address	<input type="text"/>	Street	<input type="text"/>
		Unit#	<input type="text"/>
City	<input type="text"/>	State	<input type="text"/>
		Zip Code	<input type="text"/>
		Relationship	<input type="text"/>
Emergency2 Email	<input type="text"/>		

HEALTH MEDICAL ASSESSMENT Doctor Information

Doctor's Name Doctor's Phone Number

I have a Do Not Resuscitate (DNR). Your original document, signed by your doctor, MUST be with you at the shelter.

SPECIAL CARE ASSESSMENT

<input type="checkbox"/> Blind/Low Vision	<input type="checkbox"/> Chronic Wounds	<input type="checkbox"/> Recent Hospital Discharge
<input type="checkbox"/> Deaf/Hard of Hearing	<input type="checkbox"/> Decubitus Ulcers	<input type="checkbox"/> C-Diff
<input type="checkbox"/> Frail / Elderly	<input type="checkbox"/> IM or IV Injections	<input type="checkbox"/> MRSA
<input type="checkbox"/> Need Asst with Medications	<input type="checkbox"/> Feeding Tube	<input type="checkbox"/> Terminally Ill – Hospice
<input type="checkbox"/> Hemodialysis – at home	<input type="checkbox"/> Insulin Dependent	<input type="checkbox"/> Seizures
<input type="checkbox"/> Hemodialysis – at facility	Hemodialysis frequency	<input type="text"/>
Dialysis/Home Health Center	<input type="text"/>	Phone <input type="text"/>
Other	<input type="text"/>	

Applicant's Name



**SPECIAL MEDICAL NEEDS PROGRAM
LEE COUNTY EMERGENCY MANAGEMENT**

PO BOX 398, FORT MYERS, FL 33902-0398
FOR INFORMATION CALL 239-533-0640 / FAX# 239-477-3636

COGNITIVE ASSESSMENT

- Dementia
- Alzheimer's Disease
- Developmental Impairment
- Autism Spectrum
- Conduct Disorder
- Psychiatric Disorder
- Bipolar Disorder
- Parkinson's
- Anxiety
- Depression
- Causes harm to self/others
- Obsessive-Compulsive Disorder

Autism Level (Asperger's-high functioning, Moderate, Low functioning, Non-verbal)

Other

MOBILITY ASSESSMENT

- I can walk on my own
- I use a standard wheelchair
- I have a Service Animal
- Amputee
- Paraplegic
- Quadriplegic
- Multiple Sclerosis (MS)
- Muscular Dystrophy (MD)
- I need a Hoyer Lift
- I need an attendant to help with walking
- I can stand and walk cane
- I use a motorized wheelchair/scooter
- I use a walker/wheeled seat walker
- White Cane
- I weigh over 300 pounds
- I am bed-bound
- I require stretcher transport
- ALS (Lou Gehrig's Disease)

Other

WHAT HELP DO YOU REQUIRE?

- Walking
- Standing
- Getting in/out of bed
- Dressing
- Toileting
- Feeding
- Wound Care
- External / Self Catheter
- Communicating
- Ostomy
- Bowel/Bladder Incontinence
- Bathing/Showering
- Asst with Medications

Other

ELECTRICITY ASSESSMENT

- CPAP / BiPAP
- Nebulizer
- Feeding pump
- Ventilator
- Refrigerated Meds
- Apnea Monitor
- Cardiac Monitor

I require Oxygen Liters per minute I require

Applicant's Name



**SPECIAL MEDICAL NEEDS PROGRAM
LEE COUNTY EMERGENCY MANAGEMENT**

PO BOX 398, FORT MYERS, FL 33902-0398
FOR INFORMATION CALL 239-533-0640 / FAX# 239-477-3636

Oxygen usage (24 hrs/day, nights only, as needed, with CPAP/BiPAP)

Oxygen Provider

Phone Number

ADDITIONAL MEDICAL INFORMATION

I have allergies

TRANSPORTATION NEEDS

- I will provide my own transportation
- I need a ride -- Paratransit bus
- I am bed-bound and require stretcher transport

PET SHELTERING NEEDS

Name	Type	Breed	Weight	<input type="checkbox"/> Carrier/Crate	<input type="checkbox"/> Leash/Collar

Pet notes

Records relating to the registration of special needs citizens are exempt from the provisions of S.119.07(1), Florida Statutes.

I understand this registration is voluntary and do hereby request to be registered in the Lee County Special Medical Needs Program. The information contained herein is true and correct to the best of my knowledge. I understand there are limitations to the services and levels of care that are available.

I hereby grant permission to medical providers, transportation agencies, and others, to provide care and respond to my needs, and for the disclosure of any information necessary to do so. I also grant permission to emergency response agencies to enter my resident for the purpose of emergency search and rescue, and authorize the release of information necessary for these agencies to perform these services.

In an effort to ensure the safety of all shelter residents, a background screen will be run on all people evacuating to the Special Medical Needs Shelter, including the caregiver.

Applicant's Name



What is **AlertLee** and how does it work?

AlertLee is Lee County's mass notification system, provided by Everbridge. The system is capable of delivering rapid emergency notifications via one or a combination of the following methods: phone, text, email and social media. Lee County Emergency Management (LCEM) administers and maintains the AlertLee mass notification system for the purpose of alerting citizens to natural and man-made emergencies.

When will **AlertLee** be used?

The **AlertLee** system will be used when an emergency arises that you should know about. Severe weather situations, missing persons, evacuation notices, boil water notices, fire or floods and active shooter situations are few examples of the type of events that may necessitate an **AlertLee** notification.

How do I sign up?

Go to www.AlertLee.com and choose your municipality (or unincorporated Lee County), then complete the registration steps.

Will I still get emergency notifications if I do not sign up?

AlertLee contains information from the E-911 system pre-loaded into the system. This data includes published, listed telephones, but does not include cell phones or VOIP numbers. To ensure you will receive alerts to your mobile device, you should register at www.AlertLee.com. If your landline number is already in our database and you sign up using that number again, our system will only notify that number once.

What if my phone number or email address changes?

The system is only as good as the information you provide. If your contact information changes, go to www.AlertLee.com and log into your profile and update your information.

Will my contact information be shared with others?

No. The information that you provide will only be used for **AlertLee** notifications. We will not give or sell your contact or location information to any vendor or other organization.

Do I have to pay for this service? There is no cost to receive emergency alerts from **AlertLee**.



LeePrepares App

Lee County Emergency Management

Lee County Emergency Management has created the LeePrepares app to help our community prepare for and recover from disasters. LeePrepares encourages preparedness and provides situational awareness when a disaster affects Lee County.

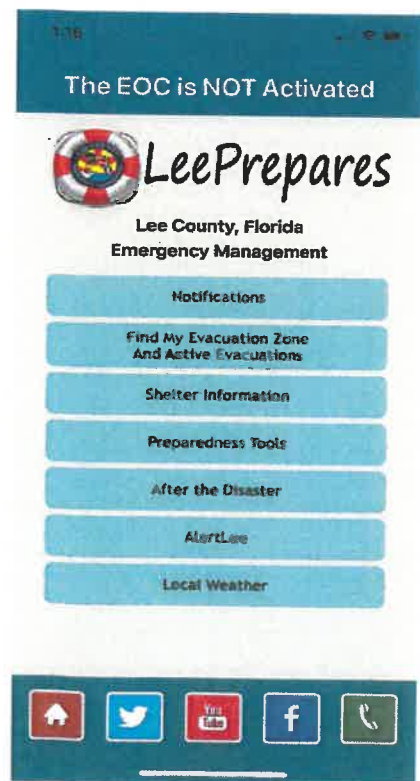
This tool assists individuals and families with preparing for and recovering from all types of disasters that may affect the community. You can Find My Evacuation Zone and Active Evacuations, look up Shelter Information and directions, Sign Up for **AlertLee**, get prepared with the Preparedness Tools (including ASL videos), find resources After the Disaster, check Local Weather, and follow our Social Media feeds.

Additional Features:

- *GPS functionality for locating your Evacuation Zone;*
- *Real time information from the EOC on shelter openings, with mapping/directions and hurricane evacuations;*
- *Current Emergency (EOC) Activation Level;*
- *After the Disaster information on re-entry, curfews, points of distribution, and coping with disasters;*
- *Sign-up for **AlertLee** emergency notification system to receive telephone, text, and/or email alerts;*
- *Frequently Asked Questions;*
- *Links to Special Needs registration for those with special medical needs, and/or transportation needs during an evacuation;*
- *Family Disaster Plan and Emergency Supply List;*
- *American Sign Language Disaster Preparedness Videos;*
- *Current local weather and hazardous weather outlooks.*

The LeePrepares application requires an active internet connection and will indicate when data is unavailable.

LeePrepares is available in the [iTunes](#) and [Google Play](#) app stores.





CAN YOU
TAKE CARE OF
YOUR
PET
IN AN

EMERGENCY?

TIPS TO HELP SECURE YOUR PET'S SAFETY IN AN EMERGENCY:



1. Use a **microchip or collar ID** with up-to-date contact information



2. Put a **pet rescue decal** on the door or window so first responders know a pet may be inside



3. Know where to look for your pet if they're afraid so that you can **evacuate** faster



4. Have a **pet-friendly** place in mind to go in case you have to leave your home



5. Carry a **picture** of your pet in the even of separation



6. Take a **pet carrier or crate** with you for transport and safe keeping



Lee County Domestic Animal Services

Pet Hurricane Kit Contents

Pet First Aid:

- Antibiotic ointment (topical wound treatment)
- Hydrogen peroxide
- Saline Solution (eye wash)
- Cotton swabs
- Gauze pads
- Gauze roll
- Bandage pads non-sticky
- Bandage tape
- Syringe or eye dropper
- Digital thermometer (rectal)
- Tweezers
- Bandage scissors
- Non-Latex gloves

Your Pet's Personal Items:

- Medical record from veterinarian including vaccination dates
- Regular medication
- Leash and Collar with county license and other ID attached
- Food & water
- Bowls
- Leash and collar
- Familiar toys and bedding
- Litter and pan for cats
- Impact-resistant carrier
- Current photos

Prepare Ahead

- * Make sure your pets are microchipped. LCDAS has a walk-in clinic M-F.
- * Keep current photos of your pets with your emergency supplies.
- * Stock your emergency kit ahead of time.
- * If you know a disaster is immediate, bring your pets inside. Lee County Ordinance prohibits pets from being tethered outside.
- * If you must evacuate, take your pets with you. Your pet's best protection is to be with you.
- * Call ahead to make sure hotels will accept pets. Find pet-friendly lodging in Florida and throughout the United States at www.petswelcome.com or www.bringfido.com.
- * Ask friends or family to provide temporary care for your pets.
- * Lee County's Evacuation Pet Shelter will be open for residents who live in areas that are under mandatory evacuation orders in the area where they live. This option should be your last resort if you are unable to execute your own personal evacuation plan for your family and pets. It should not be your "evacuation plan."
- * Acquire an impact resistant pet carrier or cage for each animal.
- * Survey your home to determine the safest location away from windows.

Emergency Supply Checklist

- * Portable, impact-resistant carrier (soft carriers do not provide enough protection).
- * Food/water bowls, can opener, spoon
- * A two- to three-week supply of your pet's food and water in plastic bottles.
- * Pooper scooper and small plastic bags for dogs.
- * Litter and litter box for cats.
- * At least a one-week supply of your pet's regular medications.
- * First Aid Kit.
- * Health records, including vaccination records.
- * Collar or harness and leash.
- * Make sure your pets are wearing proper identification (a collar and a tag). Have your pet implanted with a microchip ID as a permanent form of identification.

Evacuation Pet Shelters

The Mandatory Evacuation Shelter will be operated similar to people shelters, and like people shelters, you will not be able to pre-register. Pet owners are required to stay at the shelter and are responsible for the care and management of their pets.

Evacuation Shelter Locations

The shelter(s) may be located at South Fort Myers High School, 14020 Plantation Road, Fort Myers; East Lee County High School, 715 Thomas Sherwin Ave., Lehigh Acres; or potentially another location(s) depending on the nature and direction of the storm. Stay tuned to local radio and TV stations for an announcement indicating where the Evacuation Pet Shelters will be located.

Lost Your Pet?

Lee County Ordinance requires finders surrender found pets to Animal Services within 24 hours so owners who are looking for their pets can find them. Do not delay looking for your pet. Remember, tags can come off so don't assume your pet was wearing identification when we found them. You must complete a missing pet report and also provide proof of ownership, which includes:

- * Current veterinary records
 - * A county tag/registered microchip
- Lost pets are listed on our website which updates on the hour-
www.leelostpets.com.